

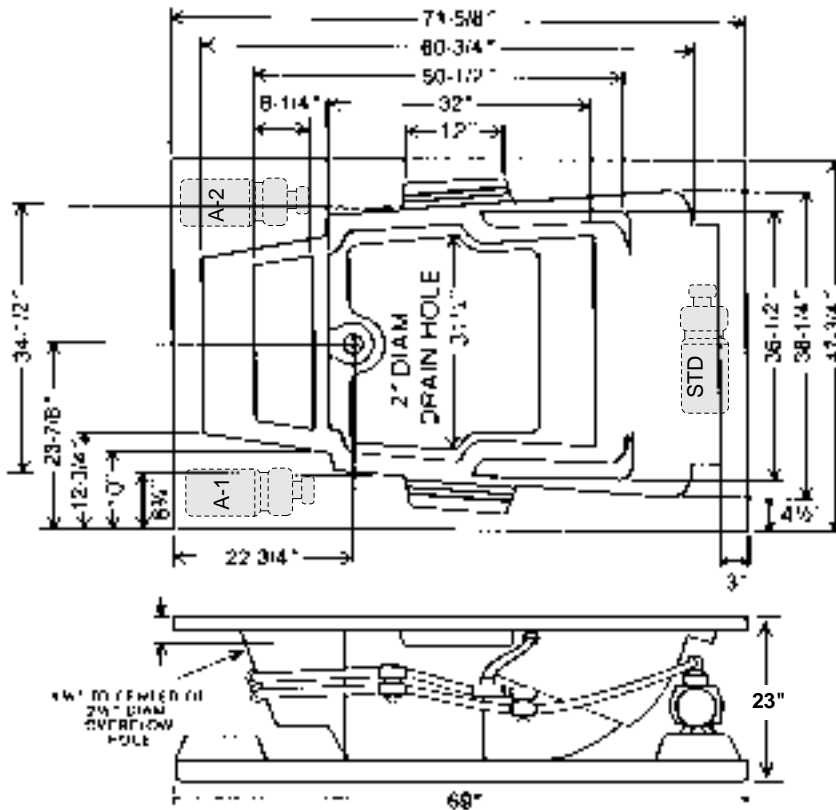
# LAUREL MOUNTAIN WHIRLPOOLS

## A L I F A X

MODEL: #4872-HW  
 ACRYLIC BATH ONLY: #4872-HT

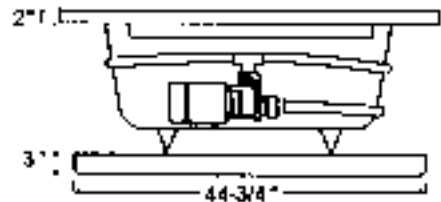
The acrylic whirlpool bath shall be model #4872-HW (4872-HT) as manufactured by Laurel Mountain Whirlpools, Inc. It shall be constructed of .125 thick cast acrylic sheet, backed by layers of polyester resin and fiberglass roving. It will be mounted on a FRP pre-leveled base. All components will be UL listed and approved. The pump motor will be 2 horsepower (1 phase, 115V, 60HZ, 3450 RPM, pre-mounted) and the plumbing system will be rigid PVC. The unit will contain 6 multi-directional, adjustable jets, dual air controls and a safety suction fitting. Access to pump and plumbing system must be provided by installer in accordance with established plumbing and electrical codes.

ELECTRICAL SPECIFICATIONS - 115V, 20 AMP, GFCI Protected Circuit. Additional identical circuit required with installed heater. If optional Solo Touch electronic on/off is installed, a 120 VAC, 20 AMP, GFCI dedicated circuit is required.



| SPECIFICATIONS   | WHIRLPOOL  | TUB        |
|--|------------|------------|
| 71 <sup>5</sup> / <sub>8</sub> " x 47 <sup>3</sup> / <sub>4</sub> " x 23" Lip 2" |            |            |
| Water Capacity - Operating Level .....   | 75.0 gal.  |            |
| - To Overflow .....  | 98.0 gal.  | 98.0 gal.  |
| Approx. Unit Weight .....  | 230.0 lbs. | 195.0 lbs. |
| Approx. Shipping Weight .....  | 300.0 lbs. | 265.0 lbs. |

\*All dimensions are +/- <sup>3</sup>/<sub>8</sub>" and subject to change without notice. Always pre-measure tub/whirlpool prior to framing alcove or creating deck installation cut out.



ELECTRICAL REQUIREMENTS: 115V, 20 AMP, GFCI Protected Circuit. Additional source circuit required for optional In-Line "I" Heater. 120 VAC, 20 Amp, GFCI dedicated circuit required with option "Solo Touch" On/off control